

HAWAII HIGH SCHOOL  
**HHSAA**  
ATHLETIC ASSOCIATION



# HHSAA 2020 GIRLS BASKETBALL STATE CHAMPIONSHIPS PROGRAM

## DIVISION I

FEBRUARY 3, 6-8, 2020  
TBD REGIONAL SITES,  
MOANALUA HIGH SCHOOL,  
KALANI HIGH SCHOOL,  
BLAISDELL CENTER ARENA

## DIVISION II

FEBRUARY 5-8, 2020  
HILO CIVIC CENTER

# ZIPPY'S

**MORE CONVENIENT  
MORE CHOICES  
MORE SALES**

## EASIER TO REACH YOUR FUNDRAISING GOALS



**Zippy's Chili**



**Portuguese Bean Soup**



**Meat Sauce**

**Your organization can make \$4.00\*  
per ticket sold!**

*\*Before taxes*

To learn more about Zippy's Fundraising Program, visit [zippys.com](http://zippys.com) or call 973-0880.

**SNAPPLE HAWAII HIGH SCHOOL  
ATHLETIC ASSOCIATION GIRLS  
BASKETBALL STATE CHAMPIONSHIPS  
FEBRUARY 4 - 9, 2019**



# TABLE OF CONTENTS

**DIVISION I:**

**Tbd Regional Sites, Moanalua High School, Kalani High School, Blaisdell Center Arena (2/3, 2/6-8)**

**DIVISION II**

**Damien & Kalani High Schools (Feb. 6 - 8)  
Stan Sheriff Center (Feb. 8, 9)**

Executive Director's Message	5
Committees and Mahalo	6
Championship Records	8
<b>Division I Bracket</b>	<b>22</b>
<b>Division II Bracket</b>	<b>23</b>

## DIVISION I TEAMS

<b>IOLANI</b> Raiders	10
<b>KAISER</b> Cougars	12
<b>KAHUKU</b> Red Raiders	13
<b>KALANI</b> Falcons	14
<b>MARYKNOLL</b> Spartans	15
<b>KONAWAENA</b> Wildcats	17
<b>LAHAINALUNA</b> Lunas	18
<b>MOANALUA</b> Na Menehune	19
<b>WAIAKEA</b> Warriors	20
<b>MILILANI</b> Trojans	24
<b>RADFORD</b> Rams	25
<b>KING KEKAULIKE</b> Na Alii	26

## DIVISION II TEAMS

<b>CAMPBELL</b> Sabers	28
<b>DAMIAN MEMORIAL</b> Monarchs	29
<b>FARRINGTON</b> Governors	30
<b>HANALANI</b> Royals	31
<b>HAWAII BAPTIST ACADEMY</b> Eagles	32
<b>HAWAII PREPATORY ACADEMY</b> Ka Makani	33
<b>KAMEHAMEHA-HAWAII</b> Warriors	34
<b>MCKINLEY</b> Tigers	35
<b>MID PACIFIC INSTITUTE</b> Owls	36
<b>SEABURY HALL</b> Spartans	37
<b>LANAI</b> Pinelasses	38
<b>WAIMEA</b> Menehunes	39

**CREDITS:** 2019 Hawaii Girls Basketball State Championship Program was produced by **Clarity Printing, LLC** in conjunction with the Hawaii High School Athletic Association. All rights reserved. Tournament Logo by **Billy Tees**, billytees.com. Cover photo provided by **Andrew Lee**. Cover and layout design by **Nelson Gaspar**.

HAWAII HIGH SCHOOL  
**HHSAA**  
ATHLETIC ASSOCIATION



**ON THE PLACES  
SNAPPLE  
CAN GO NOW  
IN PLASTIC**



**SAME POP  
AND THAT'S  
A FACT**





## A Message from the Executive Director of the HHSAA



The Hawaii High School Athletic Association has been around for more than six decades. But how much do you really know about your state association? Here are some things that you may not know...

- HHSAA is comprised of 95 member public and private schools.
- The HHSAA sanctions 44 state championships in 18 different high school sports.
- Each year, we serve more than 35,000 student-athletes through athletics. Research shows that being a student-athlete is more than about fun and games. It teaches important life lessons, too! Not only do high school athletes have higher grade point averages and fewer school absences than non-athletes, they also develop the kind of work habits and self-discipline skills that help them become more responsible community members.
- Approximately 100,000 fans attend HHSAA's tournaments annually. Attending high school sporting events teaches important life lessons, too! Among them, it teaches that we can live in different communities, come from different backgrounds, faiths and cultures, cheer for different teams, and still have a common bond.

But facts and numbers aside, the HHSAA is about those 35,000 student-athletes. Because of the dedication and hard work of our school administrators, athletic directors, and coaches, it is clear, that we are getting the job done. Education-based high school sports are alive and well in Hawaii.

If you are one of those coaches, school administrators, educators, sponsors, families, or fans, thank you for all you are doing to support high school sports in Hawaii. As the numbers above suggest, together we are doing an excellent job.

Sincerely,

Christopher Chun  
Executive Director

# SNAPPLE HAWAII HIGH SCHOOL ATHLETIC ASSOCIATION GIRLS BASKETBALL STATE CHAMPIONSHIPS

FEBRUARY 3, 6-8, 2020

**DIVISION I:**  
Tbd Regional Sites,  
Moanalua High School,  
Kalani High School,  
Blaisdell Center Arena  
(2/3, 2/6-8)

**DIVISION II:**  
Hilo Civic Center  
(2/5-2/8)



## ACKNOWLEDGEMENTS

### HAWAII HIGH SCHOOL ATHLETIC ASSOCIATION

**Executive Director**  
Chris Chun

**Associate Director**  
Russell Aoki

**Director of Information & Marketing**  
Natalie Iwamoto

**Girls Basketball Coordinator**  
Mona Faasoa

**Girls Basketball Assistant Coordinator**  
Eddie Maruyama

**Officials Co-Coordinators**  
Francis Aiu and Alton Mamiya

### TOURNAMENT COMMITTEE

**Host School**  
John Chung, Roosevelt High School  
Hoku Haliniak, Pahoia High School

**Site Directors**  
Bob Morikuni, McKinley High School  
Joel Kawachi, Moanalua High School

**Big Island Interscholastic Federation**  
Lyle Crozier, *Executive Director*  
Hoku Haliniak, *Coordinator*

**Interscholastic League of Honolulu**  
Blane Gaison, *Executive Director*  
Peter Estomago, *Coordinator*

**Kauai Interscholastic Federation**  
Brent Mizutani, *Executive Director*  
Kelii Morgado, *Coordinator*

**Maui Interscholastic League**  
Joseph Balangitao, *Executive Director*  
Scott Soldwisch, *Coordinator*

**Oahu Interscholastic Association**  
Raymond Fujino, *Executive Director*  
Stacie Nii, *Coordinator*

**Athletic Trainers**  
OIA, ILH

### SPECIAL THANKS

Snapple  
Lorene Luke,  
*Regional Sales Manager*  
Neal Blaisdell Center  
Thomas Herman, Elizabeth Ishihara

THE OFFICIAL BALL OF

# HHSAA

Baden builds the tools you need to perform at your best, making sure you have the top quality performance you need to stay on the field.

HAWAII HIGH SCHOOL  
**HHSAA**  
ATHLETIC ASSOCIATION



An advanced microfiber cover with perfect tack. Patented Cushion Control Technology™ for a softer feel, a truer bounce, and a longer life. The Baden ElitePro™ Basketball is our top-of-the-line, king-of-the-court game ball.

[sales@badensports.com](mailto:sales@badensports.com) | 1.800.544.2998

**Baden**  
SPORTS

[www.badensports.com](http://www.badensports.com)

# HHSAA GIRLS BASKETBALL CHAMPIONS AND SEMIFINALISTS CHAMPIONSHIP RECORDS

YEAR	SCHOOL	LEAGUE	HEAD COACH	RUNNER-UP	THIRD PLACE	FOURTH PLACE
1977	Maryknoll	ILH	Russell Dung	Punahou	Kamehameha	Waianae
1978	Maryknoll	ILH	Russell Dung	Kalaheo	Waipahu	Kohala
1979	Punahou	ILH	Robin Durand	University	Kalaheo	Moanalua
1980	Punahou	ILH	Robin Durand	University	Kahuku	Leilehua
1981	Punahou	ILH	Robin Durand	University	Roosevelt	Waipahu
1982	University	ILH	Larry Kanda	Punahou	Roosevelt	Waianae
1983	Kahuku	OIA	Harry Kahuanui	University	Radford	Kamehameha
1984	University	ILH	Nelson Yoshioka	Kamehameha	Roosevelt	Waianae
1985	Waiakea	BIIF	Gilbert Tomas	Kahuku	Roosevelt	Farrington
1986	Waiakea	BIIF	Gilbert Tomas	Farrington	Kahuku	Iolani
1987	Iolani	ILH	Calvin Hashimoto	Maryknoll	Aiea	Farrington
1988	Kamehameha	ILH	Al Apo	Waiakea	Iolani	Maryknoll
1989	Iolani	ILH	Bernie Ching	Kamehameha	Kaiser	Kahuku
1990	Kamehameha	ILH	Al Apo	Iolani	Hilo	Farrington
1991	Kamehameha	ILH	Al Apo	University	Radford	Moanalua
1992	Kamehameha	ILH	Al Apo	Moanalua	Honokaa	Radford
1993	Kamehameha	ILH	Al Apo	Iolani	Moanalua	Waiakea
1994	Punahou	ILH	Shelley Kahuanui Fey	Iolani	Moanalua	Kahuku
1995	Iolani	ILH	Bernie Ching	Kamehameha	Punahou	McKinley
1996	Iolani	ILH	Bernie Ching	Kamehameha	McKinley	Radford
1997	Punahou	ILH	Shelley Kahuanui Fey	Honokaa	McKinley	Kalaheo
1998	Punahou	ILH	Shelley Kahuanui Fey	Kalaheo	Waiakea	Baldwin
1999	Kamehameha	ILH	Clay Cockett	Punahou	Kalaheo	Waiakea
2000	Kamehameha	ILH	Clay Cockett	Kalaheo	Punahou	Mid-Pacific
2001	Aiea	OIA	Fran Villarmia-Kahawai	Kalaheo	(none)	(none)
2002	Kamehameha	ILH	Clay Cockett	Punahou	Iolani	Kahuku
2003	Punahou	ILH	Mike Taylor	Kahuku	Moanalua	Farrington

## DIVISION I CHAMPIONS AND SEMIFINALISTS

YEAR	SCHOOL	LEAGUE	HEAD COACH	RUNNER-UP	THIRD PLACE	FOURTH PLACE
2004	Konawaena	BIIF	Bobbie Awa	Kahuku	Punahou	Baldwin
2005	Punahou	ILH	Mike Taylor	Konawaena	Honokaa	Kahuku
2006	Punahou	ILH	Mike Taylor	Roosevelt	Honokaa	Konawaena
2007	Konawaena	BIIF	Bobbie Awa	Punahou	Honokaa	Iolani
2008	Punahou	ILH	Mike Taylor	Iolani	Radford	Waiakea
2009	Konawaena	BIIF	Bobbie Awa	Punahou	Lahainaluna	Farrington
2010	Lahainaluna	MIL	Todd Rickard	Konawaena	Punahou	Iolani
2011	Konawaena	BIIF	Bobbie Awa	Punahou	Iolani	Lahainaluna
2012	Konawaena	BIIF	Bobbie Awa	Iolani	Kahuku	Lahainaluna
2013	Kamehameha	ILH	Darold Imanaka	Konawaena	Hilo	Iolani
2014	Punahou	ILH	Kevin Velasco	Lahainaluna	Millilani	Hilo
2015	Konawaena	BIIF	Bobbie Awa	Lahainaluna	Maryknoll	Roosevelt
2016	Konawaena	BIIF	Bobbie Awa	Maryknoll	Lahainaluna	Kaiser
2017	Konawaena	BIIF	Bobbie Awa	Maryknoll	Kamehameha	Lahainaluna
2018	Konawaena	BIIF	Bobbie Awa	Maryknoll	Lahainaluna	Waiakea
2019	Iolani	ILH	Dean Young	Kamehameha-Kapalama	Konawaena	Kalani

## DIVISION II CHAMPIONS AND SEMIFINALISTS

YEAR	SCHOOL	LEAGUE	HEAD COACH	RUNNER-UP	THIRD PLACE	FOURTH PLACE
2004	Roosevelt	OIA	Bobby Keanini	St. Andrew's	St. Joseph	St. Anthony
2005	KS-Hawaii	BIIF	Kimo Miller	St. Francis	Seabury	Kalani
2006	Kalani	OIA	Darold Imanaka	KS-Hawaii	St. Francis	LaPietra
2007	KS-Hawaii	BIIF	Kalani Silva	Sacred Hearts	McKinley	Campbell
2008	Campbell	OIA	Nathan Macadangdang	McKinley	Kailua	Molokai
2009	Molokai	MIL	Doug Furlong	KS-Hawaii	Kaimuki	Kapaa
2010	Kaimuki	OIA	Mona Fa'asoa	Molokai	Kahuku	Kapaa
2011	Radford	OIA	Tani Almont-Done	KS-Hawaii	Maryknoll	Kapaa
2012	KS-Hawaii	BIIF	Garrett Arima	Kauai	Maryknoll	Hawaii Prep
2013	KS-Hawaii	BIIF	Garrett Arima	Honokaa	Kauai	Hanalani
2014	Honokaa	BIIF	Daphne Honma	KS-Hawaii	Hawaii Baptist	Molokai
2015	Honokaa	BIIF	Daphne Honma	Hawaii Baptist	KS-Hawaii	University
2016	Hawaii Baptist	ILH	Keith Sugiura	KS-Hawaii	Mid-Pacific	Kohala
2017	Mid Pacific	ILH	Sherice Ajifu	KS-Hawaii	Kalani	Saint Francis
2018	KS-Hawaii	BIIF	Weston Willard	St. Francis	Roosevelt	Honokaa
2019	Hawaii Baptist	ILH	Robin Yamaguchi	Seabury Hall	Waimea	Hanalani



# Drive. It all starts with Yes.

We support Hawaii's high school athletes and the drive, discipline, and dedication they put in to compete each and every day. And when it comes to making dreams come true off the court, we do more than cheer them on.



**First Hawaiian Bank.**

IT ALL STARTS WITH YES





**FRONT ROW:** Abby Tanaka, Lily Wahinekapu, Jovi Lefotu, Kylie Yung, Aleksandra Huntimer, Peytyn Yee, Alexis Huntimer, Haylie-Anne Ohta, Kyra Tanabe

### PLAYER ROSTER

LT/DK	NAME	HT.	POS.	GR.
11	Alexis Huntimer	5'-8"	G	11
12	Kyra Tanabe	5'-4"	G	11
13	Peytyn Yee	5'-8"	F/C	11
14	Haylie-Anne Ohta	5'-4"	G	9
15	Abby Tanaka	5'-4"	G	9
21	Jovi Lefotu	5'-8"	G/F	10
23	Lily Wahinekapu	5'-7"	G	11
24	Kylie Yung	5'-8"	G/F	12
32	Aleksandra Huntimer	5'-8"	F/C	11

#### HEAD OF SCHOOL

Dr. Timothy Cottrell

#### ATHLETIC DIRECTOR(S)

Eddie Maruyama  
Wendell Look  
Maurice Maggiolino

#### HEAD COACH

Dean Young

#### ASSISTANT COACHE(S)

Cy Ohta  
Sapyre Rezentes  
Abrianna Johnson-Edwards

#### ATHLETIC TRAINER(S)

Charley Gima  
Louise Inafuku  
Garvin Tsuji  
Flo Abara  
Joey Lee  
Shannon Keen  
Neil Santiago  
Megan Dolores

#### MANAGERS

Carole Nagaji  
Gary Young  
Greg Young  
Niko Tanabe  
Alyssa Liilli  
Jaety Mandaquit  
Alyssa Liilli  
Jaety Mandaquit  
Peyton Willing

# Do you have what it takes to win a Kaimana Scholarship?

**hmsa**  
**KAIMANA**  
**AWARDS**  
& SCHOLARSHIP PROGRAM

If you can check all the boxes below, fill out your application today.

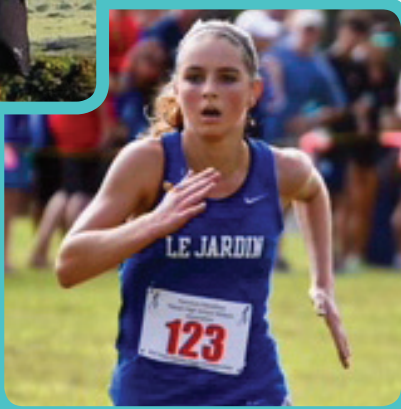
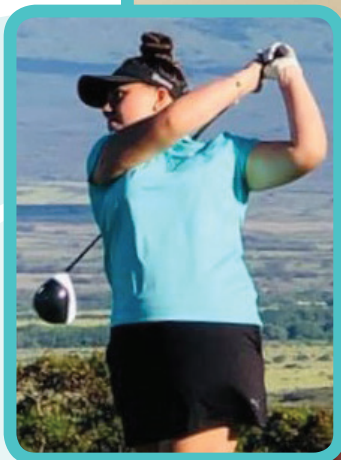
- ✓ Hawaii high school senior, class of 2020
- ✓ 2.75+ GPA
- ✓ Played a sport in high school
- ✓ Serves in the community
- ✓ Going to college

We're looking for students like you who are exceptional in the classroom, on the field, and in the community.

Apply for an HMSA Kaimana Scholarship for a chance to be awarded \$5,000 for college expenses.

**Application deadline:**  
**4 p.m., February 7, 2020**

Get information and an application at [hmsa.com/kaimana](http://hmsa.com/kaimana) or [sportshigh.com](http://sportshigh.com).



An Independent Licensee of the Blue Cross and Blue Shield Association





**FRONT ROW:** Trisadee Kahunahana, Jodie Otan, Lieann Tun, Kylie Ifuku **BACK ROW:** Macy Hill, Dacee Tsu, Madigan McConnell, Taeya Blakeney, Tatum Palom, Ivane Aholelei

## PLAYER ROSTER

LT/DK	NAME	HT.	POS.	GR.
1	Kylie Ifuku	5'-3"	G	9
3	Dacee Tsue	5'-5"	G	10
4	Lieann Tung	5'-4"	G	10
5	Jodie Otani	5'-4"	G/F	11
10	Macy Hill	5'-5"	G/F	11
12	Madigan McConnell	5'-7"	F	11
14	Ivane Aholelei	5'-7"	G/F	11
24	Trisadee Kahunahana	5'-3"	G	11
30	Tatum Paloma	5'-8"	F	10
35	Taeya Blakeney	5'-11"	C	12

### PRINCIPAL

Justin Mew

### ATHLETIC DIRECTOR(S)

Nelson Chee

### ASSISTANT AD(S)

Alex Miguel

Bryan Almadova

### HEAD COACH

Noah Keolanui

### ASSISTANT COACH(S)

Tim Hill

Aimee Tanaguchi

Reid Oshiro

### ATHLETIC TRAINER(S)

Will Clark

### TEAM MANAGER(S)

Aari S.

Alyana A.

Jaime K.

Jasey M.



## PLAYER ROSTER

LT/DK	NAME	HT.	POS.	GR.
1	Kaila Kaahu	5'4"	G	10
2	Tatianna Kamae	5'7"	G/F	12
3	Keha Benson	5'3"	G	12
4	Lela Tonga	5'6"	F/G	12
5	Kalamela Liua	5'10"	F	11
10	Kristen Lewis	5'8"	G/F	12
11	Leina Carvalho	5'4"	G	11
13	Mary Fonoimoana	6'1"	F	12
14	Teija Crawford	5'6"	F	12
22	Serina Aumua-Tuisavura	5'4"	G	12
23	Leiah Naeata	5'7"	G	11
30	Maya Claytor	5'7"	G	11
32	Trisha Faumuina	5'8"	F	12
33	Mursina Soli	5'8"	F	12

### PRINCIPAL

Donna Lindsey

### ATHLETIC DIRECTOR(S)

Wendy Anae  
Gillian Yamagata

### ASSISTANT AD(S)

Lori Vimahi  
Brandy Burke

### HEAD COACH

Latoya Wily

### ASSISTANT COACH(S)

Artevia Wily Ava  
Rachel Luarks  
Chasity Wily

### ATHLETIC TRAINER(S)

Guy Boydston

### TEAM MANAGER(S)

Posia Wily  
Tuisila Wily Ava  
Lele Wily Ava



**FRONT ROW:** Hallie Birdsong, Cassidy Kelso, Lile Oyama, Kristi Yasukochi, Remi Tsunoda **SECOND ROW:** Kali Greene, Jazzlynn Luke, Jennessice Sueing, Jennicia Sueing, Elise Harahap, Mandi Haraga

## PLAYER ROSTER

LT/DK	NAME	HT.	POS.	GR.
1	Cassidy Kelso	5'-3"	G	10
2	Mandi Haraga	5'-5"	G/F	10
3	Elise Harahap	5'-7"	F	11
5	Lile Oyama	5'-1"	G	12
10	Remi Tsunoda	5'-4"	G	12
12	Jazzlynn Luke	5'-7"	F	12
14	Jennessice Sueing	5'-11"	F	10
15	Kristi Yasukochi	5'-4"	G	9
20	Kali Greene	5'-6"	G/F	12
22	Hallie Birdsong	5'-3"	G/F	11
23	Jennicia Sueing	5'-11"	F	11

### PRINCIPAL

Mitchell Otani

### ATHLETIC DIRECTOR(S)

Greg Van Cantfort

### ASSISTANT AD(S)/HEAD COACH

Justice Sueing

### ASSISTANT COACH(S)

Jeff Woods

Kandyce Woods

### ATHLETIC TRAINER(S)

Marissa Sumida

Ben Kuenzli

### TEAM MANAGER(S)

Karen

Lacie



**LEFT ROW:** Kira Kaopua, Mahealani Choy Foo, Jewels Furuto, Kiara Fuller, Serenity Moananu, Taimane Faleafine-Auwae **RIGHT ROW:** Kiani Hoolulu Team Manager, Kyla Neumann, Brandie Tobin, Lilly Koki, Mahalo Akaka, Aloha Akaka

**PLAYER ROSTER**

LT/DK	NAME	HT.	POS.	GR.
1	Kira Kaopua	5'-2"	G	10
2	Lilly Koki	5'-8"	G	10
3	Mahealani Choy Foo	5'-3"	G	10
4	Serenity Moananu	5'-8"	F	11
5	Jewels Furuto	5'-5"	G	12
11	Kiara Fuller	5'-6"	G	11
12	Aloha Akaka	5'-8"	G	11
21	Taimane Faleafine-Auwae	6'-0"	C	9
23	Mahalo Akaka	5'-8"	F	11
24	Brandie Tobin	5'-7"	F	11
25	Kyla Neumann	5'-7"	G	12

**PRINCIPAL**

John Madriaga

**ATHLETIC DIRECTOR(S)**

Ben Valle

**ASSISTANT AD(S)**

Blaine Gier

**HEAD COACH**

Chico Furtado

**ASSOCIATE HEAD COACH**

Tony Hoolulu

**ASSISTANT COACH(S)**

Crystie Wong  
Aris Perez  
Shanadee Kekauoha

**ATHLETIC TRAINER(S)**

Danielle Smith

**TEAM MANAGER(S)**

Kiani Hoolulu  
Hailey Perez  
Justice Kekauoha  
Janel Yap  
Isabella Arrisgado

**STATISTICIANS**

Lynn Furtado  
Kim Hoolulu

# Orthopedic Care Close to Home

If joint pain interrupts your daily life, we can help. Get the orthopedic care that you need close to home.

We treat patients from all walks of life—from recreational and elite athletes, to those who share our passion for active living. We listen and take the time to understand the activities you want to get back to, and discuss treatment options.

Our board-certified orthopedic specialists treat elbow, foot/ankle, general trauma, hand, hip/pelvis, knee, and shoulder conditions.



**ORTHOPEDIC  
CENTER**



**THE QUEEN'S  
MEDICAL CENTER  
WEST O'AHU**

**Contact us to make an appointment. All ages welcome.**

**Call: 808-691-3520**

Hours: Monday - Friday, 8:00 am - 4:30 pm • Saturday, 8:00 am - 12:00 pm  
Physicians Office Building West, Suite 305 • [www.queens.org/westoahu](http://www.queens.org/westoahu)

HAWAII'S HEALTH CARE LEADER

The Queen's Medical Center is a 501(c)(3) nonprofit health care provider.





## PLAYER ROSTER

LT/DK	NAME	HT.	POS.	GR.
2	Kayla Pak	PG,SG	10	-
3	Kaliana Salazar-Harrell	PG, SG	10	-
5	Jayla Medeiros	F, C	11	-
10	Grace Hing	PG, SG	12	-
11	Braelyn Kauhi	SG, SF	9	-
12	Mahea Cachero	G	11	-
22	Juliana Losalio-Watson	G, SF	10	-
30	Sanoe Kihe	F, C	10	-
32	Kassie Alapai	G, SF	11	-
33	Caiyle Kaupu	SF, C	12	-
35	Dallas Carlos	F, C	10	-
-	Rebekkah Fong	-	10	-
-	Gabryela Kaipo	-	11	-
-	Iolani Kamakau	-	12	-

### PRINCIPAL

Shawn Suzuki

### ATHLETIC DIRECTOR

Kellye Krug

### HEAD COACH(ES)

Dawnyelle Awa

Bobbie Awa

### ASSISTANT COACH(ES)

Kevin Yamasaki

Jessica Hanato

Joel Carlos

Donald Awa

### ATHLETIC TRAINER(S)

Shaun Oness

Carly Yamamoto

### MANAGER(S)

Conner Kadooka

Kyriah James



**FRONT ROW:** Margie Ruiz-Sana, Chaland Pahukoa, Piper Pascua, Paia Asuela, Aira Baguyo **BACK ROW:** Taylor Eldridge, Ashley Akamine, Abby Akamine, Alea Kimokeo, Kiera Kaniho, Kyana Brucelas, Haley Mahoe, Ame Taufa

## PLAYER ROSTER

LT/DK	NAME	HT.	POS.	GR.
1	Paia Asuela	-	G	10
2	Abigail Akamine	-	G	11
3	Chaland Pahukoa	-	G	9
5	Ashley Akamine	-	G	11
11	Alea Kimokeo	-	F	11
12	Aira Baguyo	-	G	11
14	Piper Pascua	-	G	10
15	Kiera Kaniho	-	F	10
21	Taylor Eldredge	-	G/F	10
22	Ame Taufa	-	F	9
23	Margie Ruiz-Sana	-	G	9
24	Kyana Brucelas	-	F/C	10
30	Haley Mahoe	-	G	9

### PRINCIPAL

Lynn Kahoolahalala

### ATHLETIC DIRECTOR(S)

Scott Soldwisch

### ASSISTANT AD(S)

Jon Conrad

### HEAD COACH

Todd Rickard

### ASSISTANT COACH(S)

Ian Aotaki

Iolani Kaniho

Jason Donez

Mike Hooper

Erland Pahukoa

### ATHLETIC TRAINER(S)

Jon Conrad

Rebecca Cohen

### TEAM MANAGER(S)

Lola Donez

Mata Tavaki



**FRONT ROW:** Ariana Cazimero, Maile Shinshiro, Zia Rapada, Noalei Malacas, Shaylee-Ann Ronolo, Breanne Louis-Merry **BACK ROW:** Malik Veazie (Coach), Tiare Quijano, Manu Itula, Lauren Peters, Kirk Ronolo (Coach), Mercedes Smith, Sierra Kauwelo, Caydees Santella-Delima, Destyne Mosley, Chris Veazie (Coach)

## PLAYER ROSTER

LT/DK	NAME	HT.	POS.	GR.
1	Zia Rapada	5'-0"	G	12
4/44	Shaylee-Ann Ronolo	5'-2"	G	11
10	Destyne Mosley	5'-5"	G	11
11	Breanne Louis-Merry	5'-4"	G	12
15	Sierra Kauwelo	5'-7"	G/F	11
20	Ariana Cazimero	5'-3"	G	11
21	Noalei Malacas	5'-3"	G	11
23	Maile Shinshiro	5'-1"	G	11
24	Tiare Quijano	5'-4"	G	11
30	Lauren Peters	5'-6"	F	11
32	Manu Itula	5'-6"	F	12
33	Mercedes Smith	5'-7"	F	12
40	Caydees Santella-Delima	5'-5"	F	12

### PRINCIPAL

Robin Martin

### ATHLETIC DIRECTOR

Joel Kawachi

### ASST. ATHLETIC DIR.

Dane Canida

### COACHES

Tani Almont-Done

### ASST. COACHES

Malik Veazie

Kirk Ronolo

Chris Veazie



**FRONT ROW:** Natalie Morimoto, Leah Hara, Jaycie Nishimura, Kayla Iwata, Mikelah Hanohano Alexa Meyer  
**SECOND ROW:** Ayana Meyer, Destyne Williams, Tayvia Cabatbat, Keighsha Walker, Bethany Honma **BACK ROW:** Korri-Lynn Fernandez, Keeli-Jade Smith, Alika Smith, Jazelle Dorser, Kelsie Imai

**PLAYER ROSTER**

LT/DK	NAME	HT.	POS.	GR.
1	Kelsie Imai	5'-7"	G	12
2	Alexa Meyer	5'-6"	G	9
3	Ayana Meyer	5'-6"	G	10
4	Bethany Honma	5'-8"	F	12
5	Mikelah Hanohano	5'-4"	G	10
10	Leah Hara	5'-5"	G	11
11	Keeli-Jade Smith	5'-10"	F	12
12	Kayla Iwata	5'-5"	G	12
13	Destyne Williams	5'-7"	G	11
14	Jaycie Nishimura	5'-4"	G	12
15	Jazelle Dorser	5'-9"	F	11
20	Keighsha Walker	5'-4"	G	12
21	Natalie Morimoto	5'-9"	F	11
22	Tayvia Cabatbat	5'-4"	G	12
23	Korri-Lynn Fernandez	5'-9"	F	9

**PRINCIPAL**

Kelcy Koga

**ATHLETIC DIRECTOR(S)**

Tom Correa

**ASSISTANT AD(S)**

Donn Yamamoto  
Mike Smith

**HEAD COACH**

Alika Smith

**ASSISTANT COACH(S)**

Cheyenne Meyer  
Kirsty Imai  
James Lukzen  
Clayton Honma

**ATHLETIC TRAINER(S)**

Sharyn Kodama  
Dayton Uyeda

# Hawai'i flies with us



Proud to support Hawaii's high school sports





**DIVISION I**

TBD Regional Sites,  
 Moanalua High School, Kalani High School, Blaisdell Center Arena  
 (Feb. 3, 6–8, 2020)

**D1 CHAMPION**

**FEB. 8**  
**SATURDAY**

<b>L-12</b>	<b>3<sup>RD</sup></b>
<b>GAME 14</b> @ NBC 1:00 P	
<b>L-11</b>	

<b>W-11</b>
<b>GAME 15</b> @ NBC 7:00 P
<b>W-12</b>

**FEB. 7**  
**FRIDAY**

<b>TEAM</b>
<b>GAME 12</b> @ NBC 7:00 P
<b>TEAM</b>

<b>L-5</b>
<b>GAME 10</b> @ NBC 3:00 P
<b>L-6</b>

<b>L-7</b>
<b>GAME 9</b> @ NBC 1:00 P
<b>L-8</b>

<b>W-7</b>
<b>GAME 11</b> @ NBC 5:00 P
<b>W-8</b>

**CONSOLATION BRACKET**

**FEB. 6**  
**THURSDAY**

<b>IOLANI #1</b>
<b>GAME 5</b> @ MOANALUA 7:00 P
<b>MOANALUA</b>

<b>LAHAINALUNA #4</b>
<b>GAME 6</b> @ MOANALUA 5:00 P
<b>WAIAKEA</b>

<b>KONAWAENA #2</b>
<b>GAME 7</b> @ KALANI 7:00 P
<b>KEKAULIKE</b>

<b>KAHUKU #3</b>
<b>GAME 8</b> @ KALANI 5:00 P
<b>MARYKNOLL</b>

**FEB. 3**  
**MONDAY**

<b>MOANALUA</b>
<b>GAME 1</b> @ MOANALUA 6:00 P
<b>KAISER</b>

<b>WAIAKEA</b>
<b>GAME 2</b> @ WAIAKEA 4:00 P
<b>MILILANI</b>

<b>KEKAULIKE</b>
<b>GAME 3</b> @ KEKAULIKE 5:00 P
<b>RADFORD</b>

<b>MARYKNOLL</b>
<b>GAME 4</b> @ MARYKNOLL 6:00 P
<b>KALANI</b>

**CHAMPIONSHIP BRACKET**

20  
 DIVISION I  
 20

# GIRLS BASKETBALL STATE CHAMPIONSHIPS



## DIVISION II

All games at Hilo Civic Center, Hilo (Feb. 5-8, 2020)

FEB. 8 SATURDAY

FEB. 7 FRIDAY

FEB. 6 THURSDAY

FEB. 5 WEDNESDAY

FEB. 6/7 THURSDAY/FRIDAY

FEB. 8 SATURDAY

20 DIVISION II 20

**D2 CHAMPION**

W-11  
GAME 16 @ HCC 3:00 P  
W-12  
**5TH**

W-14  
GAME 18 @ HCC 7:00 P  
W-15

L-14  
GAME 17 @ HCC 5:00 P  
L-15  
**3RD**

L-7  
GAME 12 @ HCC 3:00 P  
L-8

L-9  
GAME 11 @ HCC 1:00 P  
L-10

W-7  
GAME 14 @ HCC 7:00 P  
W-9

W-5  
GAME 15 @ HCC 5:00 P  
W-10

MID-PAC #1  
GAME 7 @ HCC 3:00 P  
DAMIEN

KS-HAWAII #4  
GAME 9 @ HCC 7:00 P  
FARRINGTON

SEABURY #2  
GAME 8 @ HCC 5:00 P  
HAWAII BAPTIST

WAIMEA #3  
GAME 6 @ HCC 1:00 P  
HANALANI

MCKINLEY  
GAME 1 @ HCC 1:00 P  
DAMIEN

FARRINGTON  
GAME 3 @ HCC 5:00 P  
LANAI

HAWAII PREP  
GAME 4 @ HCC 7:00 P  
HAWAII BAPTIST

HANALANI  
GAME 2 @ HCC 3:00 P  
CAMPBELL

MCKINLEY  
GAME 5 @ HCC 11:00 A  
LANAI

HAWAII PREP  
GAME 10 @ HCC 11:00 A  
CAMPBELL

**CONSOLATION**

W-5  
GAME 15 @ HCC 1:00 P  
W-10



**FRONT ROW:** Kaya Sewa-Santiago, Jovi Funakoshi, Heidi Lagafuaina, Jannai Oganeku, Tylor Goldsmith **BACK ROW:** Kayla Tansiongco, Jenna Sagon-Galisa, Kianna Ponce, Chasity Jackson, Qiera Tyrell, Kylie Bagay **NOT PICTURED:** Avianna Furuta, Cienna Sisson, Christyanna Ibarra

## PLAYER ROSTER

LT/DK	NAME	HT.	POS.	GR.
5	Jovi Funakoshi	5'-3"	G	9
10	Kayla Tansiongco	5'-6"	G	12
11	Qiera Tyrell	5'-6"	G	12
12	Heidi Lagafuainga	5'-5"	G	12
13	Jannai Oganeku	5'-3"	G	11
14	Kylie Bagay	5'-6"	G	12
15	Kaya Sewa-Santiago	5'-3"	G	12
21	Kianna Ponce	5'-9"	F	11
22	Jenna Sagon-Galisa	5'-4"	G	10
23	Tylor Goldsmith	5'-3"	F	11
33	Chasity Jackson	5'-9"	F	10
34	Christyanna Ibarra	5'-3"	G	10
35	Avianna Furuta	5'-7"	F	10
44	Cici Sisson	5'-6"	F	9

### PRINCIPAL

Fred Murphy

### ATHLETIC DIRECTOR(S)

Glenn Nitta

### ASSISTANT AD(S)

James Millwood

### HEAD COACH

Michael Oyama

### ASSISTANT COACH(S)

Kristen Kato

Kalani Guillermo

Qina Shigematsu

Lyle Tamagawa

Guy Canon

Jeff Shinagawa

Jeremy Galisa

### ATHLETIC TRAINER(S)

Tobey Wolff

Rachel Loo

### TEAM MANAGER(S)

Jules Betran

Paige Fujiwara

Krystal Luna





**FRONT ROW:** Vanessa Howell, Devine Raymondo, Daphnee Fagaragan, Pomai Troche, Kailani Tenorio, Ashlyn McGarrah, Manutagi Seei **BACK ROW:** Angela Howell, Mailana Mattos, Teana Reyes, Elizabeth Savea, Angel Asaah, Amalia Houff **NOT PICTURED:** Tiffany Nunies

## PLAYER ROSTER

LT/DK	NAME	HT.	POS.	GR.
1	Daphnee Fagaragon	5'-4"	G	12
2	Teana Reyes	5'-6"	F	11
3	Devine Raymondo	5'-3"	G	12
5	Manutagi Seei	5'-5"	G	11
10	Kailani Tenorio	5'-4"	G	11
12	Mailana Mattos	5'-9"	G	9
14	Pomai Troche	5'-4"	G	12
21	Ashlyn McGarrah	5'-5"	G	12
23	Angela Howell	5'-10"	G/F	12
25	Vanessa Howell	5'-6"	G	10
22	Amalia Houff	5'-9"	F	11
35	Elizabeth Savea	5'-8"	F	11
40	Angel Asaah	5'-11"	F	10
44	Tiffany Nunies	5'-5"	G	10

### PRINCIPAL

James Sunday

### ATHLETIC DIRECTOR(S)

Kelley Sur

### ASSISTANT AD(S)

Lon Passos  
Shaun Kajiwara

### HEAD COACH

Charles Chong

### ASSISTANT COACH(S)

Christina Chong  
Clay Sorayama  
Skye Hashimoto  
Glen Goya  
Chad Goya  
Richard Albano  
Wendi Chu  
Disa Brown  
Puni Seei  
Aimee Chock

### ATHLETIC TRAINER(S)

Mansfield Lam  
Kelsey Sadowski



## PLAYER ROSTER

LT/DK	NAME	HT.	POS.	GR.
2	Cailyn Ukida	5'-3"	G	12
3	TC Pahukoa	5'-5"	G/F	11
4	Kylee Dee	5'-2"	G	9
10	Ledjan Pahukoa	5'-7"	G	9
11	Namahana Kaeo-Young	5'-5"	G	11
13	Annalee Peters	5'-3"	G	10
20	Alia Ah-You	5'-7"	F	12
21	Ashante Wong	5'-7"	F	10
22	Kreyajan Pahukoa	5'-4"	G	11
23	Kamalani Puu	5'-3"	G	10
42	Kailia Purdy	5'-8"	F	10
44	Keira Arcangel	5'-3"	F	10

### PRINCIPAL

Amy Strand

### ATHLETIC DIRECTOR(S)

PK Higa

### ASSISTANT AD(S)

Mark Makimoto  
Ronnie Kihara

### HEAD COACH

Cy Peters

### ASSISTANT COACH(S)

Lance DeSilva  
Karlee Peters

### ATHLETIC TRAINER(S)

Larissa Jimenez  
Samantha Perdido  
Cameron Smith

# WE'RE BIG FANS OF PERFORMANCE.



We applaud the performance a championship team achieves. And we drive performance on the road with our exclusive Texaco with Techron gasoline. No gas gets better mileage.





**FRONT ROW:** Cristine Corpuz, Lauren Poniatowski, Thelma Agae, Alexia Vitale, Lea Kim, Jazz Corpuz (Head Coach), Summer Aona (Assistant Coach), Raena Madeira (Assistant Coach), Vittoria Giulianelli, Desi Carr, Kasten Balino, Julien Parado, Ekela Donlin **NOT PICTURED:** Vaelua Fatu

## PLAYER ROSTER

LT/DK	NAME	HT.	POS.	GR.
1	Cristine Corpuz	5'-1"	G	11
3	E-Destine Carr	5'-5"	P	12
4	Ekela Donlin	5'-0"	G	11
10	Julien Parado	5'-3"	G	9
11	Lauren Poniatowski	5'-4"	G	10
12	Thelma Agae	5'-4"	P/G	12
15	Alexia Vitale	5'-6"	P	11
20	Lea Kim	5'-7"	P	11
23	Vaelua Fatu	5'-5"	P/G	9
24	Vittoria Giulianelli	5'-10"	P/G	11
44	Kasten Blu Balino	5'-6"	P	11

### PRINCIPAL

Jon Henry Lee

### ATHLETIC DIRECTOR(S)

Rory Pico

### ASSISTANT AD(S)

Glenn Flores  
Warren Izumigawa  
Chameka Curran  
Wyatt Tau

### HEAD COACH

Jazmine Corpuz

### ASSISTANT COACH(S)

Summer Aona  
Brian Kaaa  
Chelsea Park  
Raena Madeira

### ATHLETIC TRAINER(S)

Gisele Rerolle  
Alyssa McCarron

### TEAM MANAGER(S)

Tracie Balino



**FRONT ROW:** Tiare Arquero, Myah Foki-Chung, Kaira Wengler, Constance Keao, Theresa Anakalea  
**BACK ROW:** Rylee Ramirez, Kaycee Pitt, Gloriana Sua, Shastyne Selesele, Shayna Selesele, Tiani Souza, Tiana Maafala, Emily Brown

## PLAYER ROSTER

LT/DK	NAME	HT.	POS.	GR.
1	Kaira Wengler	5'-5"	G/F	12
2	Tiani Souza	5'-10"	G/F	9
10	Constance Keao	5'-5"	G/F	11
11	Tiare Arquero	5'-3"	G	9
12	Rylee Ramirez	5'-3"	G	10
14	Theresa Anakalea	5'-4"	G	9
15	Myah Foki-Chung	5'-3"	G	11
20	Emily Brown	5'-6"	G	10
22	Kaycee Pitt	5'-7"	F	12
23	Tiana Maafala	5'-8"	F	10
34	Shastyne Selesele	5'-9"	F	9
50	Gloriana Sua	5'-10"	F	11
55	Shayna Selesele	5'-9"	F	10

### PRINCIPAL

Dr. Kyle Atabay

### ATHLETIC DIRECTOR(S)

Rudy Alejo

### HEAD COACH

Marco Johnson

### ASSISTANT COACH(S)

Mark Arquero

Lori Hasegawa

William Antonio

### ATHLETIC TRAINER(S)

James Espinoza

Mike Cabrie

### TEAM MANAGER(S)

Kailee Ho



**FRONT ROW:** Mary Faith Faumui Tuavela, MJ Lorraine Peralta, Alicia Noga, Champagne Leopoldo, Alyssa-Mercedes Kamealoha, Hikialani Molitau, Charmmaine Balala, Teizya Telefoni, Matalasi Sevaio, Shaylen Tatupu-Timu, Falesefulu Kahaleua-Sagote **NOT PICTURED:** Jorja Williams

## PLAYER ROSTER

LT/DK	NAME	HT.	POS.	GR.
10	Hikialani Molitau	5'-3"	G	11
11	Shaylen Tatupu-Timu	5'-7"	G/F	11
12	MJ Lorraine Peralta	5'-5"	G/F	12
15	Charmmaine Balala	5'-3"	G	12
20	Teizya Telefoni	5'-4"	G	9
21	Champagne Leopoldo	5'-6"	G	11
22	Alyssa Kamealoha	5'-3"	G	10
23	Alicia Noga	5'-6"	F	10
24	Falesefulu Kahaleua-Sagote	5'-7"	F	11
33	Mary-Faith Faumui Tuavela	5'-6"	C	12
34	Jorja Williams	5'-9"	F/C	9
-	Matalasi Sevaio	-	-	-

### PRINCIPAL

Alfredo Carganilla

### ATHLETIC DIRECTOR(S)

Harold Tanaka

### ASSISTANT AD(S)

Erica Tumaneng

Brian Okada

Layne Fujimoto

### HEAD COACH

Caroline Tatupu

### ASSISTANT COACH(S)

Brydgette Tatupu-Leopoldo

Mike Quartero

Tyler Liana

### ATHLETIC TRAINER(S)

Mari Kong

Nicole Awaya

### TEAM MANAGER(S)

Donna Tatupu

Randy Wong

Ruth Tatupu



**FRONT ROW:** Tatem Foster, Maria Ralar, Jacie Nava, Kaylee Reyes, Emma Toyama, Mikela Ralar, Faith Mersburgh **BACK ROW:** Charles Hiers (Head Coach), Charli-Ann Hiers, Chera-Lei Hiers, Lishae Scanlan, Chloe Huang, Paige Nakahara, Roni Wester (Asst. Coach), Nicole Craig (Asst. Coach)

## PLAYER ROSTER

LT/DK	NAME	HT.	POS.	GR.
1	Jacie Nava	5'-3"	G	10
3	Kaylee Reyes	5'-2"	G	11
4	Emma Toyama	5'-4"	G	12
5	Charli-Ann Hiers	5'-6"	G	10
10	Mikela Ralar	5'-7"	F	12
12	Tatem Foster	5'-5"	G/F	12
13	Maria Ralar	5'-2"	G	9
15	Chloe Huang	5'-7"	F	11
22	Lishae Scanlan	5'-10"	F	10
23	Paige Nakahara	5'-5"	G/F	12
30	Faith Mersburg	5'-4"	G	9
40	Chera-Lei Hiers	5'-7"	F	9

### PRINCIPAL

Michael David

### ATHLETIC DIRECTOR(S)

Arlen Nagata

### ASSISTANT AD(S)

Jeremy Honold

### HEAD COACH

Charles Hiers

### ASSISTANT COACH(S)

Roni Wester

Nicole Craig

Leonard Mersburgh

### ATHLETIC TRAINER(S)

Sadie Sewell

### TEAM MANAGER(S)

Brian Tsutsui



**FRONT ROW:** Trislyn Maeda, Brienne Pascua, Maiyah Wong, Alexis Dang, Cydni Yoshida, Grace Takushi, Careah Baitlon **BACK ROW:** Emi Wada, Zoe Lorica, Hayley Taka, Sasha Phillip, Joey Lin, Alyssa Young, Julianne Lau

### PLAYER ROSTER

LT/DK	NAME	HT.	POS.	GR.
4	Maiya Wong	5'-3"	G	9
10	Julianne Lau	5'-5"	G	12
11	Brienne Pascua	5'-4"	G	10
12	Careah Baitlon	5'-2"	G	9
15	Cydni Yoshida	5'-5"	G	12
20	Alexis Dang	5'-5"	G	12
22	Emi Wada	5'-5"	G	10
23	Trislyn Maeda	5'-3"	G	9
25	Grace Takushi	5'-4"	G	10
32	Joey Lin	5'-7"	F	9
33	Alyssa Young	5'-5"	F	10
44	Zoe Lorica	5'-7"	F	10
45	Hayley Taka	5'-7"	F	10
50	Sasha Phillip	5'-8"	F	12

#### PRINCIPAL

Marsha Hirae

#### ATHLETIC DIRECTOR(S)

Deren Oshiro

#### HEAD COACH

Robin Yamaguchi

#### ASSISTANT COACH(S)

Isaac Hayashi

Arjay Gruspe

Bryson Ho

Candice Chun

#### ATHLETIC TRAINER(S)

Karin Carido

Samuel Lee

#### TEAM MANAGER(S)

Amber Needham





**FRONT ROW:** Hijiri Kanasugi, Tippi Chou, Kassadie Hurney, Mariah Borce, Alyssa Klett **BACK ROW:** Charles Yang (Manager), Bianca Brown, Makena Hurney, Ese Ovbagbedia, Liana Singh, Maja Burdova, Andy Lee (Manager) **NOT PICTURED:** Ali Wawner

**PLAYER ROSTER**

LT/DK	NAME	HT.	POS.	GR.
1	Alyssa Klett	-	SG	12
10	Makena Hurney	-	SF	10
12	Kassadie Hurney	-	PG	12
14	Ali Wawner	-	SG	9
21	Bianca Brown	-	C	9
23	Mariah Borce	-	PG	12
24	Liana Singh	-	C	9
25	Hijiri Kanasugi	-	SF	10
30	Tippi Chou	-	SG	12
32	Ese Ovbagbedia	-	SF	11
44	Maja Burdova	-	SG	10

**HEAD OF SCHOOL**

Patrick Phillips

**ATHLETIC DIRECTOR(S)**

Stephen Perry

**HEAD COACH**

Lacey Hester

**ASSISTANT COACH(S)**

Adrienne White  
Tim Johnson

**ATHLETIC TRAINER(S)**

Heather Berry

**TEAM MANAGER(S)**

Andy Lee  
Charles Yang



**FRONT ROW:** Megan Baldado, Juliana Pakele, Nique Pacheco, Keliikoa Kanani, Mike Scanlan (Coach)  
**BACK ROW:** Dominic Pacheco (Coach), Kaula Liwis, Sarah Huston, Donald Yamada (Coach), Sara Schubert, Sierra Scanlan

**PLAYER ROSTER**

LT/DK	NAME	HT.	POS.	GR.
2	Sarah Huston	5'-4"	G	11
3	Juliana Alena Pakele	5'-3"	G/F	12
4	Sierra Scanlan	5'-6"	G	10
5	Dominique Pacheco	5'-1"	G/F	12
11	Kaiyana Troy	5'-2"	G	9
12	Megan Baldado	5'-9"	F/C	12
14	Sara Schubert	5'-10"	G/F/C	9
15	Jordanna Takaki	5'-3"	G	10
23	Kaulaweo Liwis	5'-5"	F/F	11
45	Kealohakaumaka Rapoza	5'-7"	C	10
51	Kanani Keliikoa	6'-0"	C	12

**PRINCIPAL**

Dr. Lehua Veincent

**ATHLETIC DIRECTOR(S)**

Kimo Weaver

**ASSISTANT AD(S)**

Jeff Law

**HEAD COACH**

Dominic Pacheco

**ASSISTANT COACH(S)**

Donald Yamada  
Sweets Balles  
Kawohi Huihui  
Michael Scanlan

**ATHLETIC TRAINER(S)**

Zeny Eakins  
Jose Saucedo  
Amy Shirk

**TEAM MANAGER(S)**

Keanu Huihui

**VIDEO**

Zach Heltz  
Jordan Heltz



**FRONT ROW:** Kyana Balinbin, Hailey Nguyen, Juliana De Vera, Titanya Nguyen-Taefu, Jaena Velasco, Agatha Areola **BACK ROW:** Ashley Nguyen, Raychelle Tavai, Alexandria Buchanan, Tofalotemaile Stark-Aoelua, Princess Samuelu, Angie Luong **NOT PICTURED:** Toni Orum

## PLAYER ROSTER

LT/DK	NAME	HT.	POS.	GR.
0	Angie Luong	5' 5"	F	11
1	Jaena Velasco	5' 2"	G	9
2	Agatha Areola	5' 1"	G	10
3	Princess Samuelu	5' 5"	F	11
5	Hailey Nguyen	5' 3"	G	11
10	Ashley Nguyen	5' 4"	F	12
11	Toni Orum	5' 10"	C	9
12	Kyana Balinbin	5' 1"	G	11
15	Alexandria Buchanan	5' 7"	C	12
20	Juliana De Vera	5' 4"	G	11
23	Raychelle Tavai	5' 5"	G	12
33	Toafalotemaile Stark-Aoelua	5' 7"	C	11
45	Titanya Nguyen Taefu	5' 5"	C	11

### PRINCIPAL

Ron Okamura

### ATHLETIC DIRECTOR(S)

Bob Morikuni

### ASSISTANT AD(S)

Duane Omori

Kyle Takenaka

Ivan Tamura

Jodi Tanabe Hanazawa

### HEAD COACH

Donald Kamai

### ASSISTANT COACH(S)

Noah Chong-Viernes

Sean Kuranishi

Viliami Mafi

Aulii Mafi

Sandi Okada

### ATHLETIC TRAINER(S)

Leanna Goeckeritz

omoki Kanaoka



**FRONT ROW:** Madisyn Sagawa, Zannah Suehiro, Paige Fahrni, Caylina Lindbo, Lauren Hayashi **BACK ROW:** Mckenzie Lee, Keikinani Puaa, Amara Ueligitone, Sarae Miguel, Kalena Thurston, Alyssa Nakagawa, Dorthea Yoakum

### PLAYER ROSTER

LT/DK	NAME	HT.	POS.	GR.
10	Mckenzie Lee	5'-3"	G	10
11	Madisyn Sagawa	5'-4"	G	11
20	Zannah Suehiro	5'-6"	G/F	12
21	Kalena Thurston	5'-6"	G	10
22	Lauren Hayashi	5'-6"	G/F	10
25	Sarae Miguel	6'-0"	C	11
30	Caylina Lindbo	5'-6"	G/F	12
31	Paige Fahrni	5'-10"	C	12
32	Alyssa Nakagawa	5'-6"	F	11
34	Dorthea Yoakum	5'-6"	G/F	9
40	Amara Ueligitone	5'-8"	C	10
41	Keikinani Puaa	5'-6"	C	10

#### PRINCIPAL

Dr. Paul Passamonte

#### ATHLETIC DIRECTOR(S)

Scott Wagner

#### ASSISTANT AD(S)

Adria Mendoza

#### HEAD COACH

Reid Sagawa

#### ASSISTANT COACH(S)

Byron Cheng  
John Matsumoto  
Janelle Nomura  
Caleb Agena,  
Kiana Robertson  
Darren Tom  
Matty Miguel

#### ATHLETIC TRAINER(S)

Marcus Oshiro  
Joel Jaucian  
Trisha Carreira  
Keenan Lung  
Kaua Segawa

#### TEAM MANAGER(S)

Emmalee Spencer



**FRONT ROW:** Keone Labuanan (Coach), Faylin Sales, Valentina Lewis, Leela Waterford, Sara Lampshire, Meleani Sjostrand, Anau Tuivai, Piohia Tu'ivai, Bryanna Molina, Mansa Devaki, Ameera Waterford, Brittlay Carillo, Sylvania Amor (Coach).

## PLAYER ROSTER

LT/DK	NAME	HT.	POS.	GR.
1	Anau Tuivai	6'-1"	F/C	12
2	Ameera Waterford	5'-7"	G	12
5	Bryanna Molina	5'-9"	G/F	10
10	Faylin Sales	5'-4"	G	11
12	Brittlay Carillo	5'-7"	G	10
13	Sara Lampshire	5'-9"	F	9
14	Valentina Lewis	5'-4"	G	10
15	Tiana Medeiros	5'-7"	G	10
21	Leela Waterford	5'-8"	G	10
23	Meleani Sjostrand	5'-11"	G/F	10
33	Piohia Tuivai	5'-9"	G/F	10
50	Mansa Devaki	5'-10"	F/C	9

### PRINCIPAL

Maureen Madden

### ATHLETIC DIRECTOR(S)

Scott Prather

### HEAD COACH

Keone Labuanan

### ASSISTANT COACH(S)

Sylvania Amor

John Dudley

### ATHLETIC TRAINER(S)

Kevin Yamashiro



**LEFT TO RIGHT:** Saisha Figuerres, Claire Manuel, Lisha Figuerres, Ryllah Rodrigues, Haley Ostrander, Arriana Maltezo, Keala Montgomery, Brandi-lee Meidros, Souina Seiuli, Amaya Hoopii Baptista, Giyana Agliam, Celina Romero, Jasmine Molina

## PLAYER ROSTER

LT/DK	NAME	HT.	POS.	GR.
1	Saisha Figuerres	4'-10"	G	9
2	Claire Manuel	4'-11"	G	11
3	Celina Romero	5'-2"	G	11
4	Leisha Figuerres	5'-0"	G	9
5	Jasmine Molina	5'-0"	G	12
10	Ryllah Rodrigues	5'-5"	F	11
11	Amaya Hoopii Baptista	5'-4"	G/F	11
12	Haley Ostrander	5'-6"	G/F	9
13	Keala Montgomery	5'-8"	F	9
14	Arriana Maltezo	5'-6"	G/F	12
22	Souina Seiuli	5'-5"	F	9
24	Brandi-lee Medeiros	5'-7"	F	11
25	Giyana Agliam	5'-3"	F	11

### PRINCIPAL

Elton Kinoshita

### ATHLETIC DIRECTOR(S)

Roderick Sumagit

### ASSISTANT AD(S)

Alicia Bennett

Merrill Taguchi

### HEAD COACHES

Marylou Kaukeano

Christian Yumol

### ASSISTANT COACH(S)

Elmer Agtarap

Chante Sproat

### ATHLETIC TRAINER(S)

Alicia Bennett

### TEAM MANAGER(S)

Kawehi Fernandez-Lastimosa

Kylie Yumol



**FRONT ROW:** Malia Constantino, Tiana Ramos, Kaye Serapio, Layla Tapucol, Kierstin Gummerus, Braeanna Moises, Cori Burton, Hazel Serapio, Alysha Palacio, Brae Cayaban

## PLAYER ROSTER

LT/DK	NAME	HT.	POS.	GR.
1	Tiana-Lei Ramos	5'-3"	F	12
2	Kaye Serapio	5'-5"	G	11
5	Malia Constantino	5'-1"	G	11
10	Kierstin Gummerus	5'-5"	G	11
11	Braelynn Cayaban	5'-0"	G	11
12	Hazel Serapio	5'-4"	F	10
15	Layla Tapucol	5'-4"	F	10
23	Cori Burton	5'-5"	F	12
24	Alysha Palacio	5'-3"	F	11
30	Braeanna Moises	5'-7"	F	10

### PRINCIPAL

Mahina Anguay

### ATHLETIC DIRECTOR(S)

Jon Kobayashi

### ASSISTANT AD(S)

John Altomare

Lois Keamoai

### HEAD COACH

Natalie Mata

### ASSISTANT COACH(S)

Kamie Imai

Moani Durant

### TEAM MANAGER(S)

Skyelynn Ripley

Hailey Mata



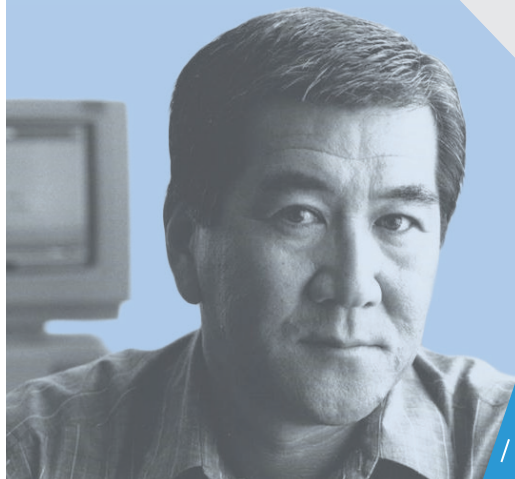
## Hawaii's Most Trusted Technology Consultants

Year after year, DataHouse is increasingly impressed by the tenacity of our local talent. We are proud to sponsor HHSAA and support the HHSAA website so that athletes, leaders, and fans stay connected and informed.

Since our founding in 1975, DataHouse has prioritized our youth and community through collaborative, technology-driven efforts so that current and future generations can thrive. We hire locally to make a global difference and give Hawaii's top students an opportunity to gain professional experience.

We look forward to participating in upcoming HHSAA events and continuing to support our extraordinary community with innovative and transformative technology solutions.

**Call us at: (808) 942-8108**  
**Visit us at: [www.datahouse.com](http://www.datahouse.com)**



/ Dan Arita - Founder of DataHouse

